

kalipyansan®

STANDART KALIP ELEMANLARI SANAYİ VE TİCARET LİMİTED ŞİRKETİ

فروشگاه کانون ابزار

نماینده شرکت kalipyansan ترکیه

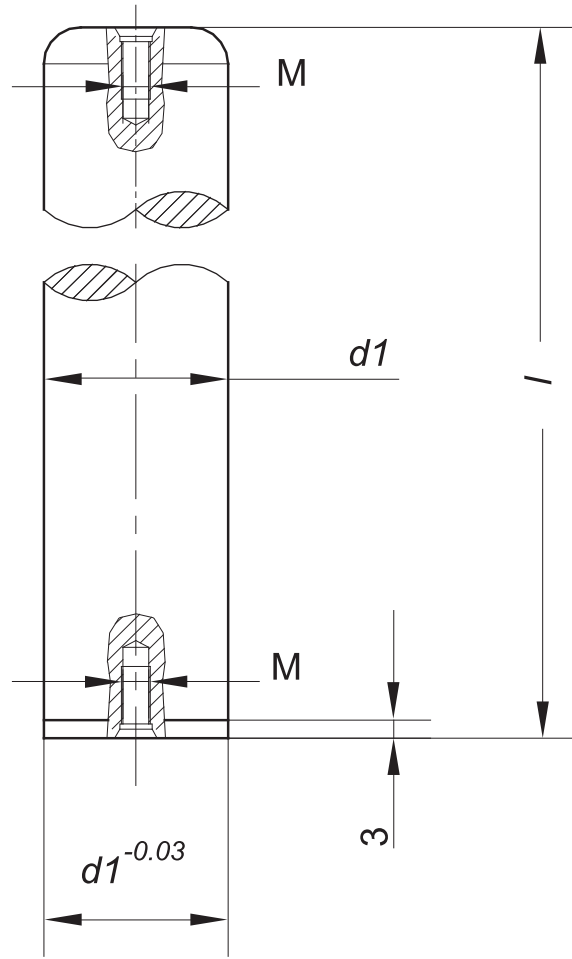
kalyansan.ir

0912 147 30 23 021 40 66 35 43





kalipyansan®



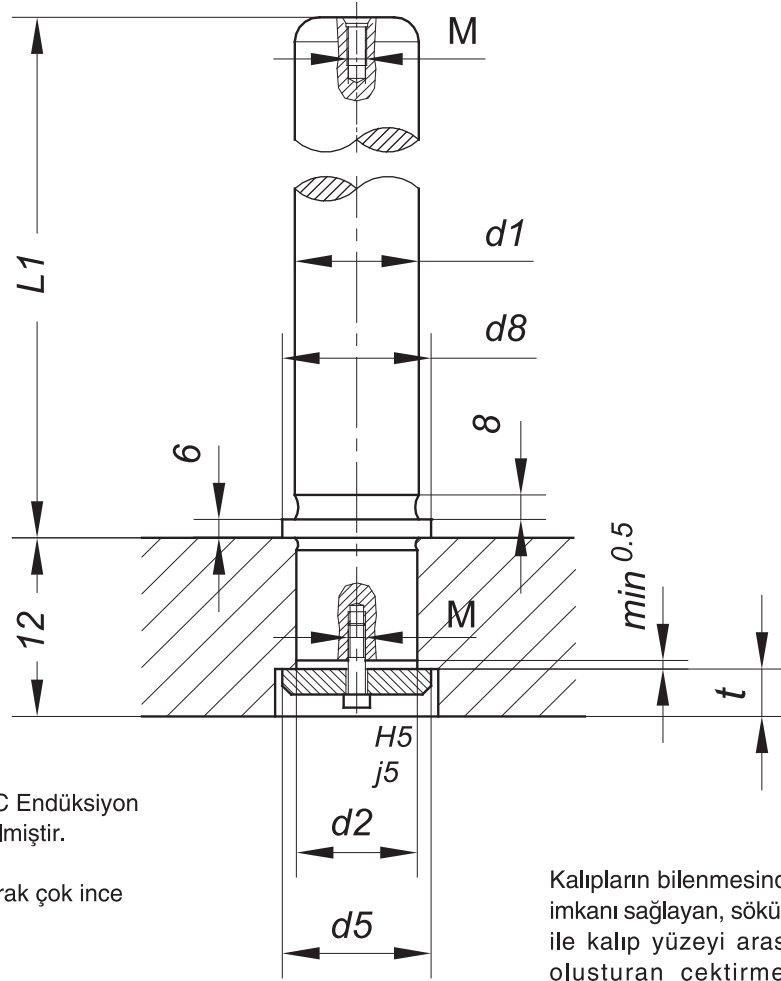
Malzeme : İmalat çeliği
Sertlik : 60 ± 2 HRC Endüksiyon ile sertleştirilmiştir.
Derinlik : ≥ 1.5 mm
Yüzey : Hassas olarak çok ince taşlanmış.

Material : Tool Steel
Surface Hardness : 60 ± 2 HRC Induction hardened
Hardness Penetration : ≥ 1.5 mm
Execution : Precision ground

204.			
d_{1h3}	I	M	Order Sipariş No.
12	100	M6 x 20	204.12.100
15	100		204.15.100
	125		204.15.125
16	100		204.16.100
	125		204.16.125
18	125		204.18.125
	160		204.18.160
19	200		204.18.200
	125		204.19.125
	160		204.19.160
20	200		204.19.200
	125		204.20.125
	160	204.20.160	
24	200	204.20.200	
	125	204.24.125	
	160	201.24.160.	
25	200	204.24.200	
	220	204.24.220	
	125	204.25.125	
	160	204.25.160	
25	200	204.25.200	
	220	204.25.220	

204.			
d_{1h3}	I	M	Order Sipariş No.
30	160	M8 x 25	204.30.160.
	200		204.30.200
	220		204.30.220
	240		204.30.240
	260		204.30.260
	280		204.30.280
32	160		204.32.160
	200		204.32.200
	220		204.32.220
	240		204.32.240
38	260		204.32.260
	280		204.32.280
	160	204.38.160	
	200	204.38.200	
40	240	204.38.240	
	280	204.38.280	
	315	204.38.315	
40	160	204.40.160	
	200	204.40.200	
	240	204.40.240	
	280	204.40.280	
	315	204.40.315	

204.			
d_{1h3}	I	M	Order Sipariş No.
48	200	M10 x 30	204.48.200
	240		204.48.240
	280		204.48.280
	315		204.48.315
	400		204.48.400
50	200		204.50.200
	240		204.50.240
	280		204.50.280
60	315		204.50.315
	400		204.50.400
	240		204.60.240
63	315		204.60.315
	400	204.60.400	
	450	204.60.450	
80	240	204.63.240	
	315	204.63.315	
	400	204.63.400	
	450	204.63.450	
80	315	M12 x 30	204.80.315
	400		204.80.400
	500		204.80.500
	600		204.80.600



Malzeme: İmalat çeliği
Sertlik : 60 ± 2 HRC Endüksiyon ile sertleştirilmiştir.
Derinlik : ≥ 1.5 mm
Yüzey : Hassas olarak çok ince taşlanmış.

Material : Tool Steel
Surface Hardness : 60 ± 2 HRC Induction hardened
Hardness Penetration : ≥ 1.5 mm
Execution : Precision ground

Kalıpların bilenmesinde, çabuk ve kolay montaj imkanı sağlayan, sökülebilir, kılavuz sütun eksenine kalıp yüzeyi arasında hatasız bir dik açı oluşturan çektirmeli kılavuz sütunlardır.

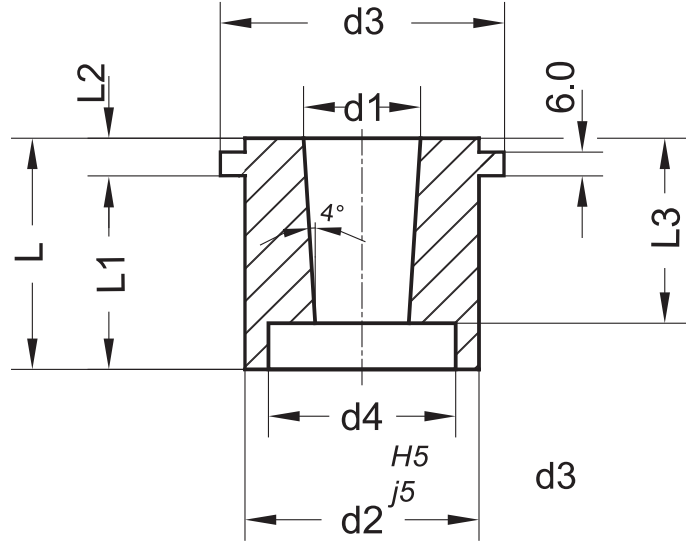
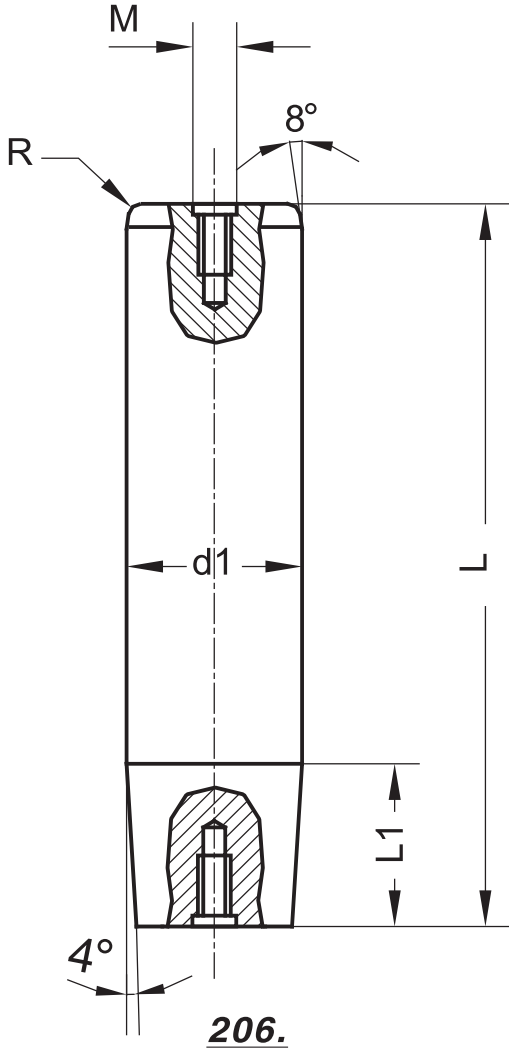
Demountable pillars with shoulder are suited to applications where die sharpening requires dismantling and re-fitting

205.

d _{1h3}	l ₁	l ₂	d ₂	d ₈	d ₅	t	M	Order No. Sipariş No.
24	125	32	24	31,5	32	11	M6x20	205.24.125
	160	32	24	31,5	32	11	M6x20	205.24.160
	200	32	24	31,5	32	11	M6x20	205.24.200
	220	32	24	31,5	32	11	M6x20	205.24.220
	240	32	24	31,5	32	11	M6x20	205.24.240
25	125	32	25	31,5	32	11	M6x20	205.25.125
	160	32	25	31,5	32	11	M6x20	205.25.160
	200	32	25	31,5	32	11	M6x20	205.25.200
	220	32	25	31,5	32	11	M6x20	205.25.220
	240	32	25	31,5	32	11	M6x20	205.25.240
30	125	36	30	39,5	40	14	M8x25	205.30.125
	160	36	30	39,5	40	14	M8x25	205.30.160
	200	36	30	39,5	40	14	M8x25	205.30.200
	220	36	30	39,5	40	14	M8x25	205.30.220
	240	36	30	39,5	40	14	M8x25	205.30.240
	260	36	30	39,5	40	14	M8x25	205.30.260
	280	36	30	39,5	40	14	M8x25	205.30.280
32	125	36	32	39,5	40	14	M8x25	205.32.125
	160	36	32	39,5	40	14	M8x25	205.32.160
	200	36	32	39,5	40	14	M8x25	205.32.200
	220	36	32	39,5	40	14	M8x25	205.32.220
	240	36	32	39,5	40	14	M8x25	205.32.240
	260	36	32	39,5	40	14	M8x25	205.32.260
	280	36	32	39,5	40	14	M8x25	205.32.280

205.

d _{1h3}	l ₁	l ₂	d ₂	d ₈	d ₅	t	M	Order No. Sipariş No.
38	160	40	40	56	50	15	M8x25	205.38.160
	200	40	40	56	50	15	M8x25	205.38.200
	240	40	40	56	50	15	M8x25	205.38.240
	280	40	40	56	50	15	M8x25	205.38.280
	160	40	42	56	50	15	M8x25	205.40.160
40	200	40	42	56	50	15	M8x25	205.40.200
	240	40	42	56	50	15	M8x25	205.40.240
	280	40	42	56	50	15	M8x25	205.40.280
	200	50	50	71	60	18,5	M10x30	205.48.200
48	240	50	50	71	60	18,5	M10x30	205.48.240
	280	50	50	71	60	18,5	M10x30	205.48.280
	315	50	50	71	60	18,5	M10x30	205.48.315
50	200	50	52	71	60	18,5	M10x30	205.50.200
	240	50	52	71	60	18,5	M10x30	205.50.240
	280	50	52	71	60	18,5	M10x30	205.50.280
	315	50	52	71	60	18,5	M10x30	205.50.315
	200	56	60	80	70	22,5	M10x35	205.60.200
60	240	56	60	80	70	22,5	M10x35	205.60.240
	280	56	60	80	70	22,5	M10x35	205.60.280
	315	56	60	80	70	22,5	M10x35	205.60.315
	350	56	60	80	70	22,5	M10x35	205.60.350
	200	56	63	80	70	22,5	M10x35	205.63.200
63	240	56	63	80	70	22,5	M10x35	205.63.240
	280	56	63	80	70	22,5	M10x35	205.63.280
	315	56	63	80	70	22,5	M10x35	205.63.315
	350	56	63	80	70	22,5	M10x35	205.63.350


207.
206.

d1h3	L	I ₁	M	Order / Sipariş No
24	160	37	M8 x 25	206.24.160
	200			206.24.200
	225			206.24.225
	250			206.24.250
25	160	37		206.25.160
	200			206.25.200
	225			206.25.225
	250			206.25.250
30	160	45		206.30.160
	200			206.30.200
	225			206.30.225
	250			206.30.250
32	160	45		206.32.160
	200			206.32.200
	225			206.32.225
	250			206.32.250

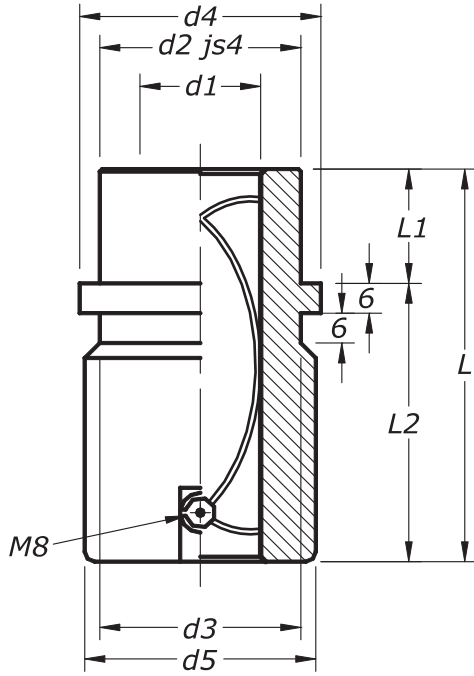
206.

d1h3	L	I ₁	M	Order / Sipariş No	
38	200	50	M8 x 25	206.38.200	
	225			206.38.225	
	250			206.38.250	
	315			206.38.315	
40	200	50		206.40.200	
	225			206.40.225	
	250			206.40.250	
	315			206.40.315	
48	225	55		M10 x 30	206.48.225
	250				206.48.250
	315				206.48.315
	400				206.48.400
50	225	55			206.50.225
	250				206.50.250
	315				206.50.315
	400				206.50.400

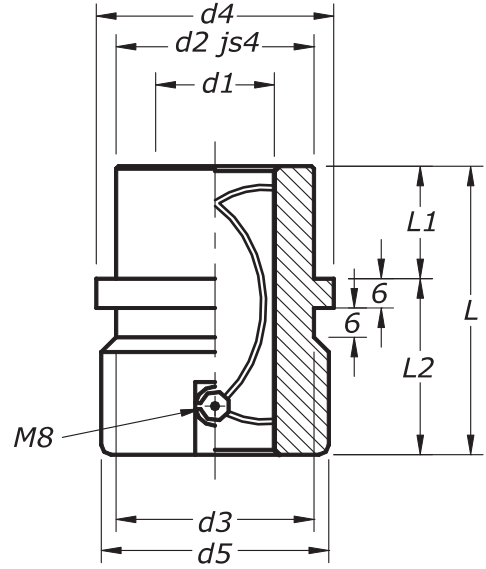
207.

Ø d1	24-25	30-32	38-40	48-50
Ø d2	40	48	58	70
Ø d3	48	54	64	78
Ø d4	26	32	40	50
L	52	60	65	73
L1	40	45	50	55
L2	12	15	15	18
L3	37	45	50	55
Sipariş Örneği / Example of Ordering				
Ø d1 = 32				
207.32				

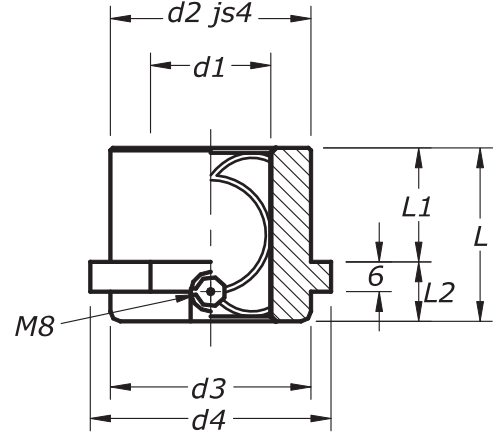
ISO 9448



651.



652.



653.

Malzeme : Takım Çeliği
Material : Tool Steel
Sertlik : 54± 56 HRC
Hardness

651.

d ₁	d ₂₌₃	d ₄	d ₅	l	l ₁	l ₂
19-20	32	40	39	59	23	36
24-25	40	48	46	79	23	56
30-32	48	56	53	93	30	63
38-40	58	66	63	108	37	71
48-50	70	80	77	127	47	80
60-63	85	95	92	150	60	90
80	105	118	115	150	60	90

Sipariş Örneği / Example of Ordering

651	d ₁	L
50	x	127

651.50.127

652.

d ₁	d ₂₌₃	d ₄	d ₅	l	l ₁	l ₂
19-20	32	40	39	43	23	20
24-25	40	48	46	59	23	36
30-32	48	56	53	75	30	45
38-40	58	66	63	82	37	45
48-50	70	80	77	97	47	50
60-63	85	95	92	116	60	56
80	105	118	115	120	60	60

Sipariş Örneği / Example of Ordering

652	d ₁	L
50	x	97

652.50.97

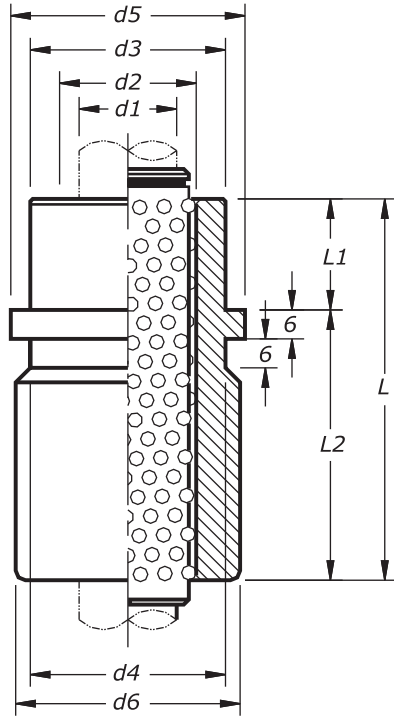
653.

d ₁	d ₂₌₃	d ₄	d ₅	l	l ₁	l ₂
19-20	32	40	39	35	23	12
24-25	40	48	46	35	23	12
30-32	48	56	53	42	30	12
38-40	58	66	63	52	37	15
48-50	70	80	77	65	47	18
60-63	85	95	92	80	60	20
80	105	118	115	80	60	20

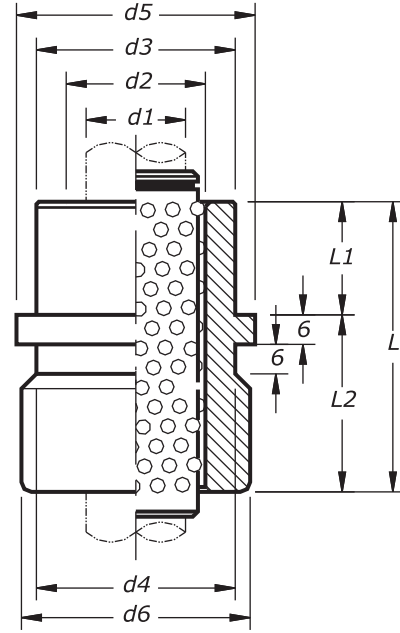
Sipariş Örneği / Example of Ordering

651	d ₁	L
50	x	65

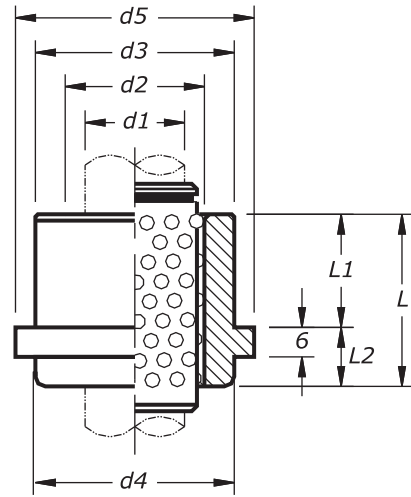
653.50.065



654.



655.



656.

Malzeme : Takım Çeliği
Material : Tool Steel

Sertlik : 62±2 HRC
Hardness

654.

d ₁	d ₂	d ₃₋₄	d ₅	d ₆	l	l ₁	l ₂
19-20	25-26	32	40	39	59	23	36
24-25	30-31	40	48	46	79	23	56
30-32	38-40	48	56	53	93	30	63
38-40	46-48	58	66	63	108	37	71
48-50	56-58	70	80	77	127	47	80
60-63	68-71	85	95	92	150	60	90

Sipariş Örneği / Example of Ordering

654	d1	L	
	50	x 127	654.50.127

655.

d ₁	d ₂	d ₃₋₄	d ₅	d ₆	l	l ₁	l ₂
19-20	25-26	32	40	39	43	23	20
24-25	30-31	40	48	46	59	23	36
30-32	38-40	48	56	53	75	30	54
38-40	46-48	58	66	63	82	37	45
48-50	56-58	70	80	77	97	47	50
60-63	68-71	85	95	92	116	60	56

Sipariş Örneği / Example of Ordering

655	d1	L	
	50	x 97	655.50.097

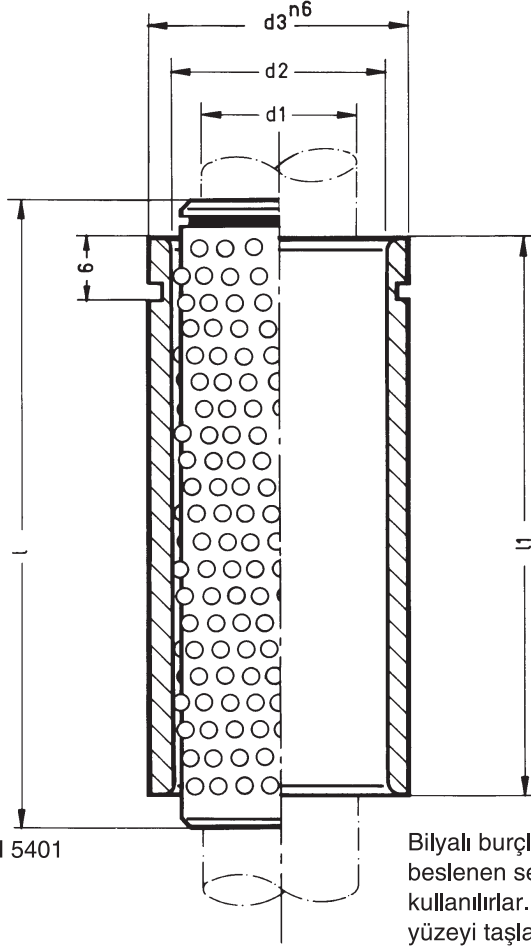
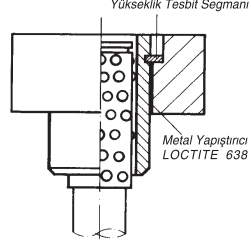
656.

d ₁	d ₂	d ₃₋₄	d ₅	d ₆	l	l ₁	l ₂
19-20	25-26	32	40	39	35	23	12
24-25	30-31	40	48	46	35	23	12
30-32	38-40	48	56	53	42	30	12
38-40	46-48	58	66	63	52	37	15
48-50	56-58	70	80	77	65	47	18
60-63	68-71	85	95	92	80	60	20

Sipariş Örneği / Example of Ordering

656	d1	L	
	50	x 97	656.50.065

Bilyalı kafes + Çelik burç
Takım olarak



Malzeme : Burç : Sementasyon çeliği
Sertlik : 62 ± 2 HRC
Derinlik : ≥ 0.5 mm
Bilyalı kafes : Bronz
Bilya : Sertleştirilmiş çelik DIN 5401
Material : Bush : Tool Steel
Hardness : 62 ± 2 HRC
Hardness Penetration : ≥ 0.5 mm
Cage : Brass
Balls : Hardened Steel DIN 5401

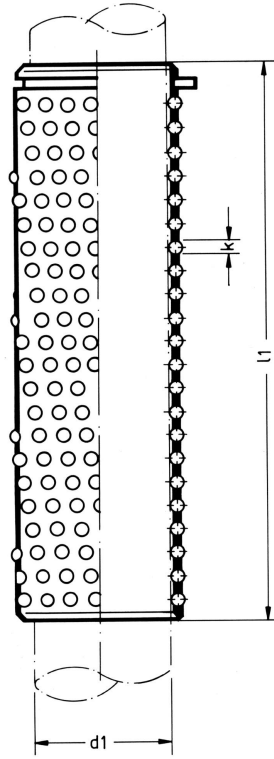
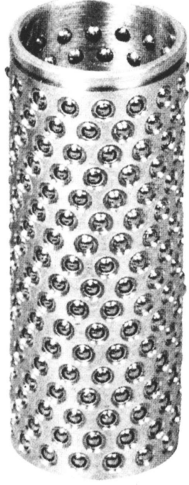
Bilyalı burçlar, otomatik sürücü ile beslenen seri ve hassas kalıplarda kullanılırlar. Çelik burcun delik yüzeyi taşlandıktan sonra honlanmıştır.

661.

d ₁	l ₁	l	d ₂	d ₃	Order No. Sipariş No.
12	35	40	17	22	661.12.035
15	40	50	21	30	661.15.040
	55	60			661.15.055
16	40	50	22	36	661.16.040
	55	60			661.16.055
18	35	40	24	36	661.18.035
	50	55			661.18.050
	65	70			661.18.065
	75	80			661.18.075
19	35	40	25	36	661.19.035
	50	55			661.19.050
	65	70			661.19.065
	75	80			661.19.075
20	35	40	26	36	661.20.035
	50	55			661.20.050
	65	70			661.20.065
	75	80			661.20.075
24	40	50	30	40	661.24.040
	55	65			661.24.055
	70	80			661.24.070
	85	90			661.24.085
25	40	50	31	40	661.25.040
	55	65			661.25.055
	70	80			661.25.070
	85	90			661.25.085

661.

d ₁	l ₁	l	d ₂	d ₃	Order No. Sipariş No.
30	45	55	38	48	661.30.045
	60	70			661.30.080
	80	85			661.30.080
	100	105			661.30.100
32	45	55	40	48	661.32.045
	60	70			661.32.060
	80	85			661.32.080
	100	105			661.32.100
38	50	55	48	58	661.38.050
	65	75			661.38.065
	90	95			661.38.090
	110	115			661.38.110
40	50	55	50	58	661.40.050
	65	75			661.40.065
	90	95			661.40.090
	110	115			661.40.110
48	55	60	58	68	661.48.055
	75	80			661.48.075
	105	120			661.48.105
50	55	60	60	68	661.50.055
	75	80			661.50.075
	105	120			661.50.105



Ball cages with stop are also available

Boşluk bırakmaksızın intibak ederek sürtünmesiz bir şekilde hareket ederler. Bu sayede bir kaç milyon strok sonunda kılavuz sütunlarda ve burçlarda asgari aşınmayı oluştururlar. Bilyalı kafesler özel bir bronz alaşımından imal edilmektedir ve bu alaşım sert olup uzun bir çalışma ömrü sağlamaktadır. Kılavuz sütununa gelen yükün eşit olarak bütün yüzeyi kapsayabilmesi için bilyalar hilesel olarak dizilmişler ve tesadüfi şekilde yerlerinden çıkılmalarını önleyecek biçimde monte edilmişlerdir.

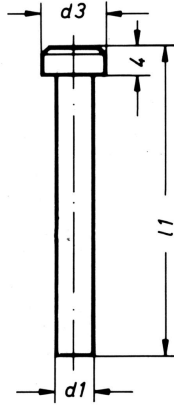
Bilyalı kafes : Bronz
Bilya : Sertleştirilmiş çelik DIN 5401
Cages : Brass
Balls : Hardened steel DIN 5401

671.			
d ₁	l ₁	k	Order / Sipariş No
12	40	2.5	671.12.040
	50		671.15.050
15	60	3	671.15.060
	70		671.15.070
16	50	3	671.16.050
	60		671.16.060
18	70	3	671.16.070
	55		671.18.055
18	70	3	671.18.070
	80		671.18.080
19	90	3	671.18.090
	55		671.19.055
19	70	3	671.19.070
	80		671.19.080
20	90	3	671.19.090
	55		671.20.055
20	70	3	671.20.070
	80		671.20.080
24	90	3	671.20.090
	50		671.24.050
24	65	3	671.24.065
	80		671.24.080
25	90	3	671.24.090
	100		671.24.100
25	120	3	671.24.120
	50		671.25.050
25	65	3	671.25.065
	80		671.25.080
25	90	3	671.25.090
	100		671.25.100
25	120	3	671.25.120

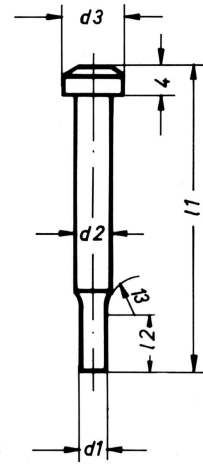
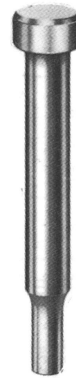
671.			
d ₁	l ₁	k	Order / Sipariş No
30	55	4	671.30.055
	70		671.30.070
	85		671.30.085
	105		671.30.105
	120		671.30.120
	140		671.30.140
32	160	4	671.30.160
	55		671.32.055
	70		671.32.070
	85		671.32.085
	105		671.32.105
	120		671.32.120
38	140	4	671.32.140
	160		671.32.160
	55		671.38.055
	75		671.38.075
	95		671.38.095
	115		671.38.115
40	120	4	671.38.120
	140		671.38.140
	160		671.38.160
	200		671.38.200
	240		671.38.240
	55		671.40.055
40	75	4	671.40.075
	95		671.40.095
	115		671.40.115
	120		671.40.120
	140		671.40.140
	160		671.40.160
40	200	4	671.40.200
	240		671.40.240

671.			
d ₁	l ₁	k	Order / Sipariş No
48	60	4	671.48.060
	80		671.48.080
	100		671.48.100
	120		671.48.120
	140		671.48.140
	160		671.48.160
50	180	4	671.48.180
	200		671.48.200
	240		671.48.240
	60		671.50.060
	80		671.50.080
	100		671.50.100
60	120	4	671.50.120
	140		671.50.140
	160		671.50.160
	180		671.50.180
	200		671.50.200
	240		671.50.240
60	95	4	671.60.095
	105		671.60.105
	120		671.60.120
	140		671.60.140
	200		671.60.200
	240		671.60.240
63	95	4	671.63.095
	105		671.63.105
	120		671.63.120
	140		671.63.140
	200		671.63.200
	240		671.63.240
80	120	6	671.80.120
	140		671.80.140
	160		671.80.160
	200		671.80.200
	240		671.80.240

DIN 9844 Form A / B



Form A



Form B

Malzeme : HWS %12 Cr'lu Takım çeliği - HSS Yüksek hız çeliği Material : HWS HSS
 Sipariş no : Form A = 10.2 - Form A = 10.3 Cod No. : Form A = 10.2 Form A = 10.3
 Form B = 11.2 - Form B = 11.3 Form B = 11.2 Form B = 11.3
 Sertlik : Gövde = 62 ± 2 HRC - Gövde = 64 ± 2 HRC Hardness : Shank = 62 ± 2 HRC Shank = 62 ± 2 HRC
 : Şapka = 45 ± 5 HRC - Şapka = 45 ± 5 HRC Head 45 ± 5 HRC Head 45 ± 5 HRC

103.

d ₁ h ₆	d ₃	l ₁ + 0,5
2,0	3,6	Stoktaki boylar 100 mm. Diğer çap ve boylar istek üzerine imal edilebilir.
3,0	5,0	
4,0	7,0	
5,0	8,5	
6,0	10,0	
8,0	12,0	100 mm lengths are available in stocks. Other diameter and l engths could be produce according to the customer specifications.
10,0	14,5	
12,0	18,0	

Sipariş Örneği / Example of Ordering:

Delik Zımbası / Hole Punch

Malzeme / Material HWS = 102 x d₁ x l₁

203 DIN 9844 Form A Özel zımba / Special punch

Sipariş Örneği / Example of Ordering:

S Başlı özel Zımba /C. Head special Punch

Malzeme / Material HWS = 202 x d₁ x l₁

113.

d ₁ h ₆	d ₂	d ₃	l ₁ + 0,5
1,0 - 1,9	2	3,6	Stoktaki boylar 100 mm. Diğer çap ve boylar istek üzerine imal edilebilir.
2,0 - 2,9	3	5,0	
3,0 - 3,9	4	7,0	
4,0 - 4,9	5	8,5	
5,0 - 5,9	6	10,0	
6,0 - 7,9	8	12,0	100 mm lengths are available in stocks. Other diameter and l engths could be produce according to the customer specifications.
8,0 - 9,9	10	14,5	
10,0 - 11,9	12	18,0	

Delik Zımbası / Hole Punch

Malzeme / Material HSS = 113 x d₁ x l₁

203 DIN 9844 Form B Özel zımba / Special punch

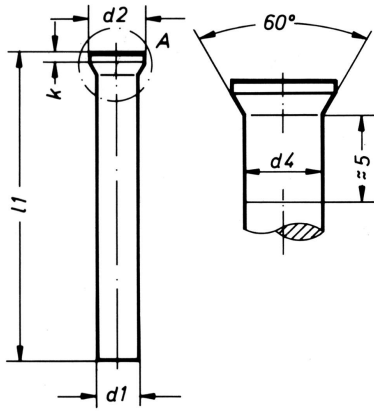
Sipariş Örneği / Example of Ordering:

S Başlı özel Zımba /C. Head special Punch

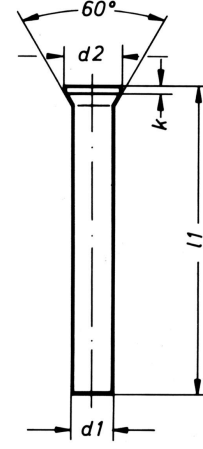
Malzeme / Material HSS = 213 x d₁ x l₁ x d₁ x 12

DIN 9861 Form DA / D

Detay A



Form DA



Form D

Malzeme : HWS %12 Cr'lu Takım çeliği
Sipariş no : Form DA = 12.2
Form D = 13.2
Sertlik : Gövde = 62 ± 2 HRC
: Şapka = 45 ± 5 HRC

- HSS Yüksek hız çeliği
- Form DA = 12.3
Form D = 13.3
- Gövde = 64 ± 2 HRC
- Şapka = 45 ± 5 HRC

Material : HWS
Ord.Cod No. : Form DA = 12.2
Form D = 13.2
Hardness : Shank = 62 ± 2 HRC
Head 45 ± 5 HRC
HSS
Form DA = 12.3
Form D = 13.3
Shank = 64 ± 2 HRC
Head 45 ± 5 HRC

122. / 123.

d ₁ h6	d ₂	d ₄	k	l ₁ +0,5
1,0 - 1,1	1,8	d ₁ +0,03	0,5	Stoktaki boylar 71 - 80 - 100 mm.
1,2 - 1,3	2,0			
1,4 - 1,5	2,2			
1,6 - 1,7	2,5			
1,8 - 1,9	2,8			
2,0	3,0			
2,1 - 2,2	3,2			
2,3 - 2,5	3,5			
2,6 - 2,9	4,0			
3,0 - 3,4	4,5			
3,5 - 3,9	5,0			
4,0 - 4,4	5,5			
4,5 - 4,9	6,0			
5,0 - 5,4	6,5			
5,5 - 5,9	7,0			
6,0 - 6,4	8,0			
6,5 - 7,0	9,0			
7,5 - 8,0	10,0			
8,5 - 9,0	11,0			
9,5 - 10,0	12,0			
10,5 - 11,0	13,0			
11,5 - 12,0	14,0			

Sipariş Örneği / Example of Ordering:

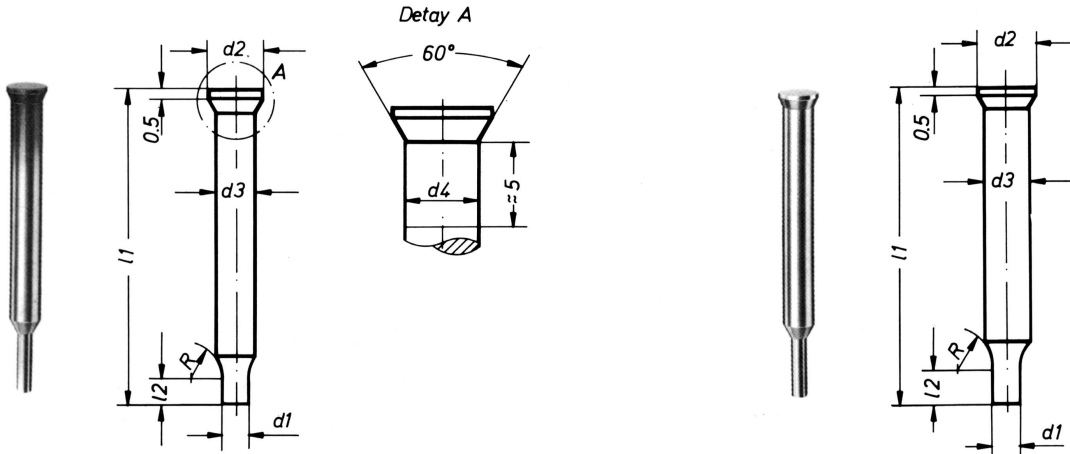
Zimba / Punch
Malzeme / Material HSS = 122 x d₁ x l₁

132. / 133.

d ₁ h6	d ₂	k	l ₁ +0,5
1,0 - 1,1	1,8	0,5	Stoktaki boylar 71 - 80 - 100 mm.
1,2 - 1,3	2,0		
1,4 - 1,5	2,2		
1,6 - 1,7	2,5		
1,8 - 1,9	2,8		
2,0	3,0		
2,1 - 2,2	3,2		
2,3 - 2,5	3,5		
2,6 - 2,9	4,0		
3,0 - 3,4	4,5		
3,5 - 3,9	5,0		
4,0 - 4,4	5,5		
4,5 - 4,9	6,0		
5,0 - 5,4	6,5		
5,5 - 5,9	7,0		
6,0 - 6,4	8,0		
6,5 - 7,0	9,0		
7,5 - 8,0	10,0		
8,5 - 9,0	11,0		
9,5 - 10,0	12,0		
10,5 - 11,0	13,0		
11,5 - 12,0	14,0		

Sipariş Örneği / Example of Ordering:

Zimba / Punch
Malzeme / Material HSS = 133 x d₁ x l₁



Form CA

Form C

Malzeme : HWS %12 Cr'lu Takım çeliği
Siparişno : Form CA = 14.2
: Form C = 15.2
Sertlik : Gövde = 62 ± 2 HRC
: Şapka = 45 ± 5 HRC

- HSS Yüksek hız çeliği
- Form CA = 14.3
Form C = 15.3
- Gövde = 64 ± 2 HRC
- Şapka = 45 ± 5 HRC

142. / 143.

d ₁ h ₆	d ₂	d ₃	d ₄	l ₂	l ₁ +0,5
0,50 - 0,55	3	2	d ₃ +0,03	7	Stoktaki boylar 71 mm.
0,60 - 0,65					
0,70 - 0,75					
0,80 - 0,85					
0,90 - 0,95					
1,00 - 1,10					
1,20 - 1,30					
1,40 - 1,50					
1,60 - 1,70	4,5	3			
1,80 - 1,90					
2,00 - 2,10					
2,20 - 2,30					
2,40 - 2,50					
2,60 - 2,70					
2,80 - 2,90					

Sipariş Örneği

Havşa başlı kademeli zımba

Malzeme / HSS = 143 x d₁ x l₁**223.** DIN 9861 Form CA'ya uygun özel zımba

Sipariş Örneği

Havşa başlı kademeli özel zımba

Malzeme / HSS = 223 x d₃ x l₁ x d₁ x l₂**152. / 153.**

d ₁ h ₆	d ₂	d ₃	l ₂	l ₁ +0,5
0,50 - 0,55	3	2	7	Stoktaki boylar 71 mm.
0,60 - 0,65				
0,70 - 0,75				
0,80 - 0,85				
0,90 - 0,95				
1,00 - 1,10				
1,20 - 1,30				
1,40 - 1,50				
1,60 - 1,70	4,5	3		
1,80 - 1,90				
2,00 - 2,10				
2,20 - 2,30				
2,40 - 2,50				
2,60 - 2,70				
2,80 - 2,90				

Sipariş Örneği

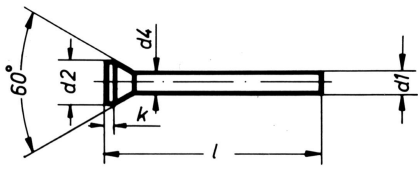
Havşa başlı kademeli zımba

Malzeme / HWS = 152 x d₁ x l₁**232.** DIN 9861 Form C'ye uygun özel zımba

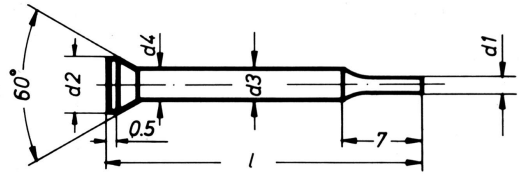
Sipariş Örneği

Havşa başlı kademeli özel zımba

Malzeme / HWS = 232 x d₃ x l₁ x d₁ x l₂



Genel olarak perfore ve baskılı devre kalıplarında zımbaların flambaja maruz kalmamaları için tercih edilirler.



Malzeme : HSS Yüksek hız çeliği
Sipariş no : **163**
Sertlik : 64 ± 2 HRC Şapka 45 ± 5 HRC

Malzeme : HSS Yüksek hız çeliği
Sipariş no : **173**
Sertlik : 64 ± 2 HRC Şapka 45 ± 5 HRC

163.

d_1 h6	d_2	d_4	k	l
0,8	1,4	$d_1+0,03$	0,5	Stoktaki boylar 30 mm.
0,9	1,6			
1,0 - 1,1	1,8			
1,2 - 1,3	2,0			
1,4 - 1,5	2,2			
1,6 - 1,7	2,5			
1,8 - 1,9	2,8			
2,0	3,0			
2,5	3,5			
3,0	4,5			

Sipariş Örneği

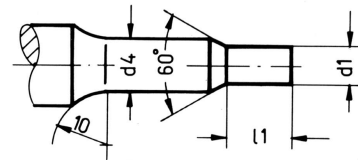
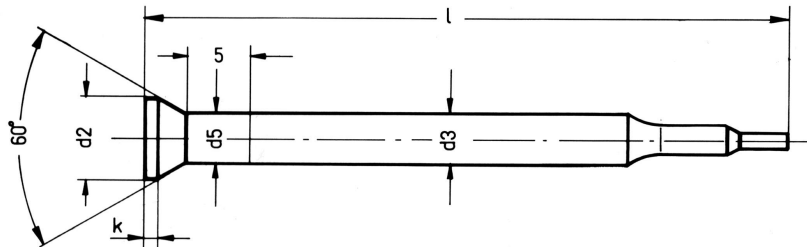
Kısa boylu delik zımbası

Malzeme / HSS = $163 \times d_1 \times l_1$ **173.**

d_1 h6	d_2	d_3	d_4	l
0,8 - 1,4	2,2	1,5	$d_3+0,03$	Stoktaki boylar 40 mm.
1,5 - 2,9	4,5	3		

Sipariş Örneği

Kısa boylu delik zımbası

Malzeme / HSS = $173 \times d_1 \times l$ 

Malzeme : HSS Yüksek hız çeliği
Sipariş No : **183**
Sertlik : 64 ± 2 HRC Şapka 45 ± 5 HRC

Sac parça üzerindeki dış çekilecek deliklerin delme ve sıvama işlemini birlikte yapan iki kademeli patlatma zımbası

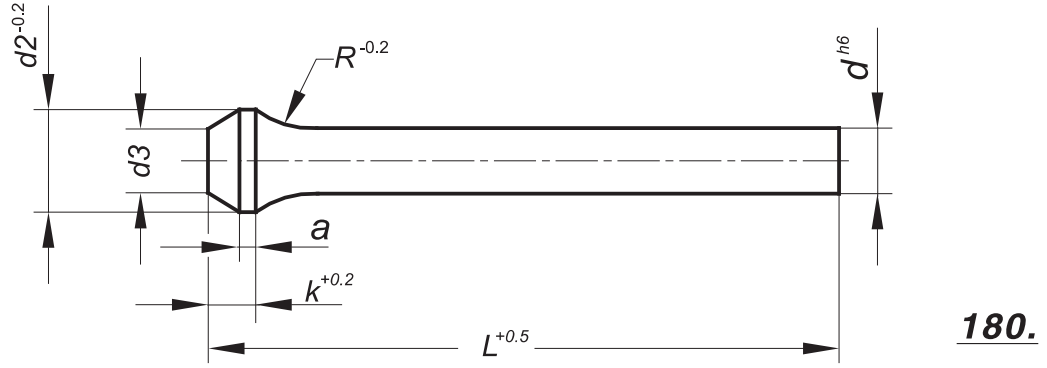
183.

Diş ölçüsü	$d_1+0,02$	d_2	d_3	$d_4+0,01$	d_5	k	$l+0,5$	l_1
M2	1,1	4,5	3,0	1,65	$d_3+0,03$	0,5	72	1,5
M2,5	1,5			2,1				2,0
M3	1,8			2,55			2,5	
M4	2,3	5,5	4,0	3,35	$d_3+0,04$	1,0	82	3,0
M5	3,0	6,5	5,0	4,25				
M6	3,6	8,0	6,0	5,1				
M8	4,9	10,0	8,0	6,85				4,0

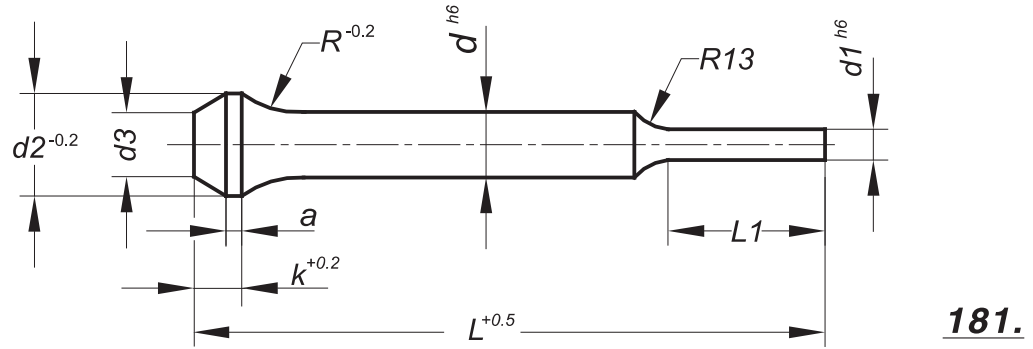
Sipariş Örneği

Delik patlatma zımbası

Malzeme / HSS = $183 \times d_1 \times l_1$



180.



181.

Malzeme : HSS
Material

Gövde Sertlik : 64±2 HRC
Shaft Hardness

Şapka Sertlik : 50±5 HRC
Head Hardness

Şişe Boyunlu (Radüs Başlı) Delik Zımbaları

Kalın, silisli, paslanmaz (krom nikel) sac ve buna benzer, kopma mukavemeti yüksek malzemelerin delik delme işlemlerinde zımba şapkasının kopmasını önlemek amacı ile tasarlanmış, şapka dayanımı yüksek zımbalardır. Özel durumlarda kademeli olarak ta kullanılırlar.

Delik zımbasının; aşınmalara karşı mukavemetini artırarak, daha düşük sürtünme kat sayısı ile çalışmasını sağlamak için, delinecek malzeme cinsine ve baskı adedine bağlı olarak zımba yüzeyine PVD kaplama işlemi tavsiye edilmektedir. Yapılan bu kaplama işlemi sayesinde zımbaların baskı adetlerinde minimum 3, maksimum 8 kata varan ömür artışları tespit edilmektedir.

TIN, TIALN, TICN

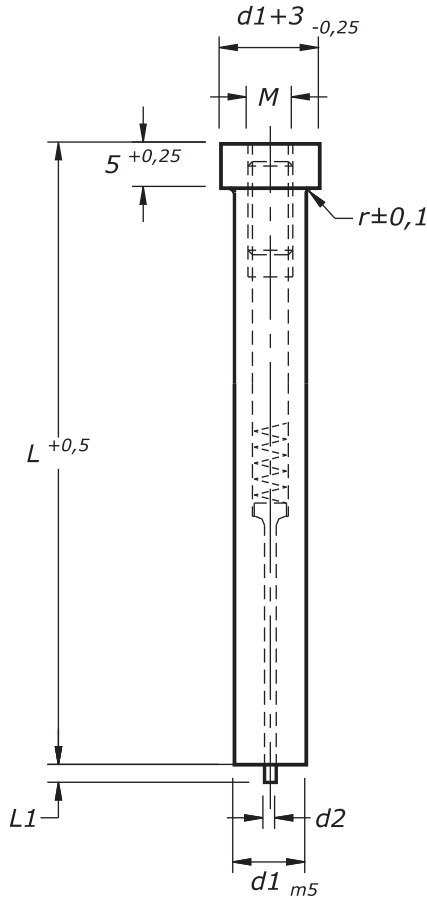
d h6	d Kademe/Steps	d1	L1	d2 Kademe/Steps	a	d3	k ^{+0.2}	r	L
2,0	0,1	3,1 - 5,9	15	3,0	1,5	d ± 0,1	3,0	6,5	71
2,1 - 2,2									
2,3 - 2,5									
2,6 - 2,9									
3,0 - 3,4									
3,5 - 3,9									
4,0 - 4,4									
4,5 - 4,9									
5,0 - 5,4									
5,5 - 5,9									
6,0 - 6,4	0,5	6,1 - 9,9	20	10,0	1,5	d ± 0,1	4,0	10	80
6,5 - 7,0									
7,5 - 8,0									
8,5 - 9,0									
9,5 - 10,0									
10,5 - 11,0									
11,5 - 12,0									
12,5 - 13,0									
13,5 - 14,0									
14,5 - 15,0									
15,5 - 16,0	0,5	10,1 - 12,9	25	15,0	1,5	d ± 0,1	4,0	12	100
16,0 - 17,0									
17,0 - 18,0									
18,0 - 19,0									
19,0 - 20,0									
20,0 - 21,0									
21,0 - 22,0									
22,0 - 23,0									
23,0 - 24,0									
24,0 - 25,0									
25,0 - 26,0	0,5	13,4 - 15,9	30	20,0	1,5	d ± 0,1	4,0	15	100
26,0 - 27,0									
27,0 - 28,0									
28,0 - 29,0									
29,0 - 30,0									
30,0 - 31,0									
31,0 - 32,0									
32,0 - 33,0									
33,0 - 34,0									
34,0 - 35,0									

Sipariş Örneği

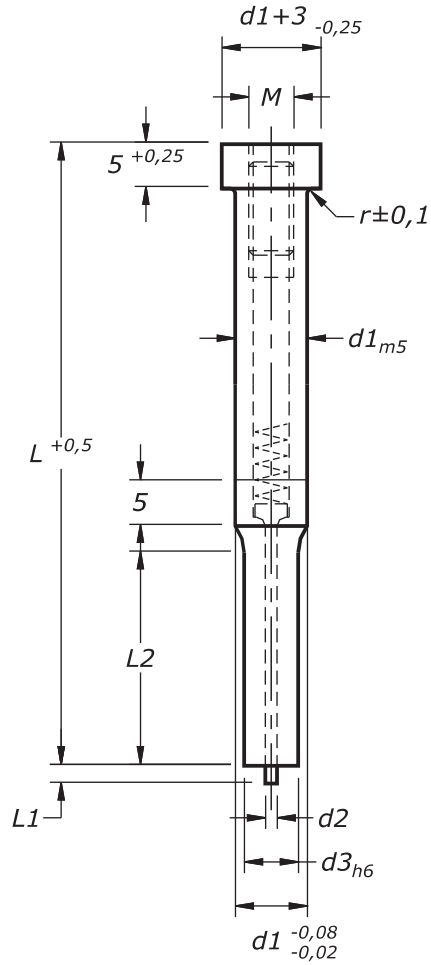
Şişe boyunlu (Radüs başlı) delik zımbası

183.0600.080.0500

ISO 8020



190.



191.

Malzeme : HSS
Material

Gövde Sertlik : 64±2 HRC
Shaft Hardness

Şapka Sertlik : 50±5 HRC
Head Hardness

Delik zımbasının; aşınmalara karşı mukavemetini artırarak, daha düşük sürtünme kat sayısı ile çalışmasını sağlamak için, delinecek malzeme cinsine ve baskı adedine bağlı olarak zımba yüzeyine PVD kaplama işlemi tavsiye edilmektedir. Yapılan bu kaplama işlemi sayesinde zımbaların baskı adetlerinde minimum 3, maksimum 8 kata varan ömür artışları tespit edilmektedir.
TIN, TIALN, TiCN

190.

d ₁	r	d ₂	d ₅	L ₁	L
5,0	0,3	0,9	2,5	0,8	71-80-100
6,0			3		
8,0		1,3	4		
10,0		1,6	5		
13,0	0,4	2,1	6	2,0	
16,0				2,5	
20,0				2,6	

Sipariş Örneği / Example of Ordering

190. d1 L
6,0 x 71 **190.0600.071**

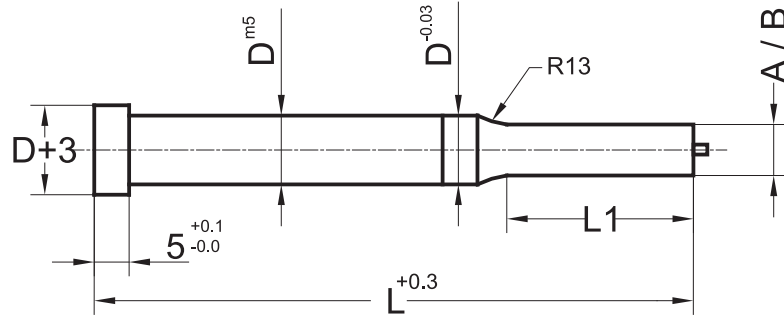
191.

d ₃	d ₁	d ₂	M	r	L ₁	L
2,5	-	7,9	8	1,3	4	71-80-100
4,0	-	9,9	10	1,6	5	
5,0	-	12,9	13	2,1	6	
8,0	-	15,9	16	2,1	6	

Sipariş Örneği / Example of Ordering

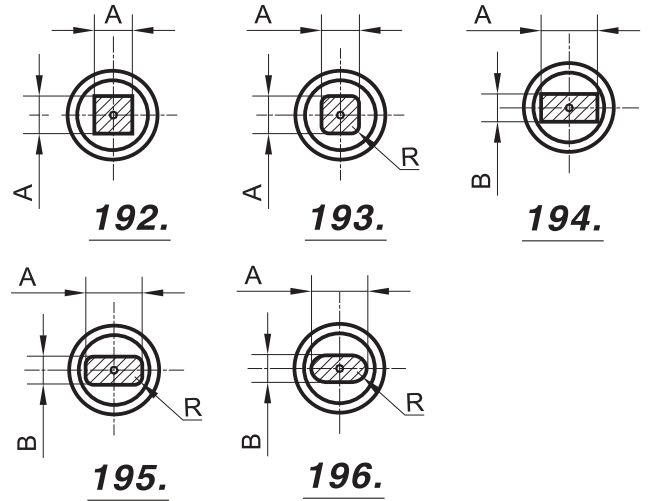
191. d1 d3 L
4,0 x 7,0 80 **191.0400.0700.080**

ISO 8020



192.

Type / ØD	I ₁	L	A
192.06	13	71	3,0 - 4,0
192.08	19		4,0 - 5,5
192.10			5,5 - 7,0
192.13		7,0 - 9,0	
192.16	100	80	9,0 - 11,0
192.20		11,0 - 14,0	
192.25		14,0 - 17,5	
192.32	25	18,0 - 22,0	
Sipariş Örneği			
Type / ØD	I ₁	L	A
192.13	19	80	8,50
192.13.19.080.0850			



193.

Type / ØD	I ₁	L	A	R
193.06	13	71	3,0 - 4,0	0,5 - 1,0
193.08	19		4,0 - 5,5	
193.10			5,5 - 7,0	
193.13		7,0 - 9,0		
193.16	100	80	9,0 - 11,0	1,0 - 2,0
193.20		11,0 - 14,0		
193.25		14,0 - 17,5		
193.32	25	18,0 - 22,0	1,5 - 3,0	
Sipariş Örneği				
Type / ØD	I ₁	L	A	R
193.13	19	80	8,50	1,0
193.13.19.080.0850.010				

195.

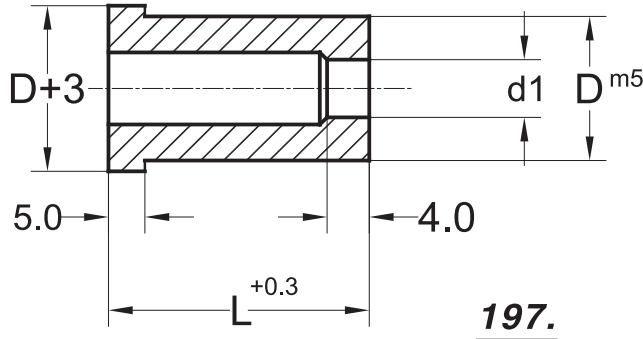
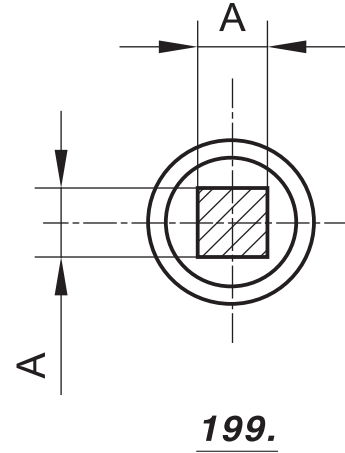
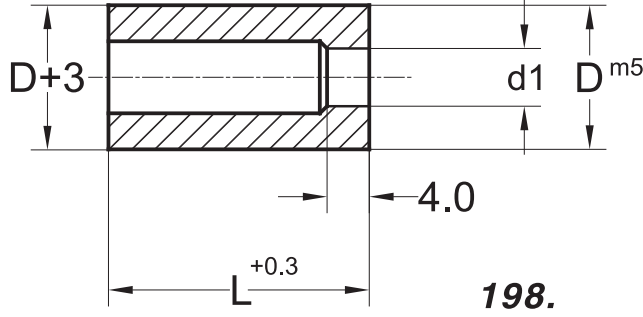
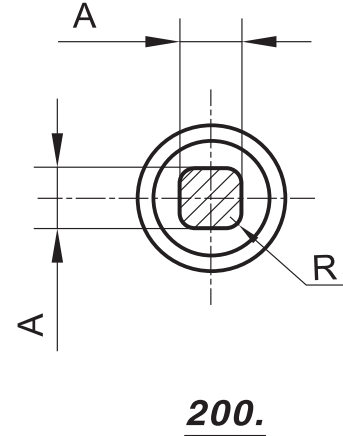
Type / ØD	I ₁	L	A	B	R
195.06	13	71	2,4 - 4,0	2,4 - 4,0	0,5 - 1,0
195.08	19		3,5 - 5,5	3,5 - 5,5	
195.10			4,0 - 7,0	4,0 - 7,0	
195.13		5,0 - 9,0	5,0 - 9,0		
195.16	100	80	6,0 - 11,0	6,0 - 11,0	1,0 - 2,0
195.20		7,0 - 14,0	7,0 - 14,0		
195.25		8,0 - 17,0	8,0 - 17,0		
195.32	25	10,0 - 22,0	10,0 - 22,0	1,5 - 3,0	
Sipariş Örneği					
Type / ØD	I ₁	L	A	B	R
195.13	19	80	8,50	11,0	1,0
195.13.19.080 / 8,5 x 11,0 - 1,0					

194.

Type / ØD	I ₁	L	A	B
194.06	13	71	2,4 - 4,0	2,4 - 4,0
194.08	19		3,5 - 5,5	3,5 - 5,5
194.10			4,0 - 7,0	4,0 - 7,0
194.13		5,0 - 9,0	5,0 - 9,0	
194.16	100	80	6,0 - 11,0	6,0 - 11,0
194.20		7,0 - 14,0	7,0 - 14,0	
194.25		8,0 - 17,0	8,0 - 17,0	
194.32	25	10,0 - 22,0	10,0 - 22,0	
Sipariş Örneği				
Type / ØD	I ₁	L	A	B
194.16	19	100	6,0	11,0
194.16.19.100 / 6,0 x 11,0				

196.

Type / ØD	I ₁	L	A	B
196.06	13	71	3,0 - 5,0	3,0 - 5,0
196.08	19		4,0 - 7,0	4,0 - 7,0
196.10			5,0 - 9,0	5,0 - 9,0
196.13		6,0 - 12,0	6,0 - 12,0	
196.16	100	80	7,0 - 15,0	7,0 - 15,0
196.20		8,0 - 19,0	8,0 - 19,0	
196.25		10,0 - 24,0	10,0 - 24,0	
196.32	25	12,0 - 30,0	12,0 - 30,0	
Sipariş Örneği				
Type / ØD	I ₁	L	A	B
196.13	19	80	8,5	11,5
196.13.19.080 / 8,5 x 11,0				


197.

199.

198.

200.
197.

Type / ØD	L			Ø d1
	22	28	32	
197.08	•	•	•	1,5 - 3,2
197.10	•	•	•	1,5 - 5,0
197.13	•	•	•	2,0 - 7,0
197.16	•	•	•	5,0 - 9,0
197.20	•	•	•	7,0 - 11,0
197.25		•	•	11,0 - 16,0
197.32		•	•	13,0 - 20,0

Sipariş Örneği

Type / ØD	L	Ø d1
197.13	28	6,5

197.13.28.0650
199.

Type / ØD	L			A
	22	28	32	
199.13	•	•	•	2,0 - 7,0
199.16	•	•	•	2,4 - 9,0
199.20	•	•	•	3,2 - 11,0
199.25		•	•	5,0 - 16,0
199.32		•	•	6,0 - 20,0

Sipariş Örneği

Type / ØD	L	Ø d1
199.13	28	6,5

199.13.28.0650
198.

Type / ØD	L			Ø d1
	22	28	32	
198.08	•	•	•	1,5 - 3,2
198.10	•	•	•	1,5 - 5,0
198.13	•	•	•	2,0 - 7,0
198.16	•	•	•	5,0 - 9,0
198.20	•	•	•	7,0 - 11,0
198.25		•	•	11,0 - 16,0
198.32		•	•	13,0 - 20,0

Sipariş Örneği

Type / ØD	L	Ø d1
198.08	22	3,0

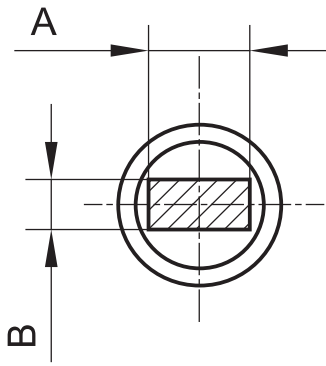
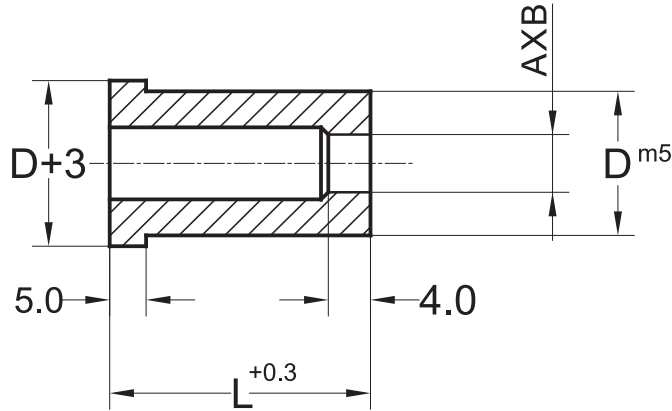
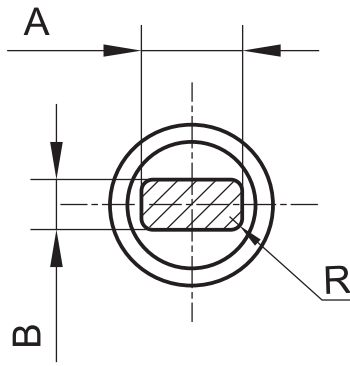
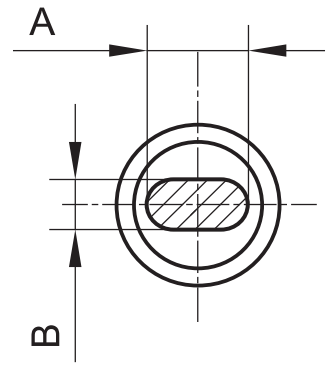
198.08.22.0300
200.

Type / ØD	L			A	R
	22	28	32		
200.13	•	•	•	2,0 - 7,0	0,8 - 1,5
200.16	•	•	•	2,4 - 9,0	1,0 - 2,0
200.20	•	•	•	3,2 - 11,0	1,5 - 3,0
200.25		•	•	5,0 - 16,0	
200.32		•	•	6,0 - 20,0	

Sipariş Örneği

Type / ØD	L	Ø d1	R
200.16	32	8,0	1,8

200.16.32.0800.018

201.202.203.**201.**

Type Ø D	L			A	B
	22	28	32		
201.13	•	•	•	2,0 - 7,0	2,0 - 7,0
201.16	•	•	•	2,4 - 9,0	2,4 - 9,0
201.20	•	•	•	3,2 - 11,0	3,2 - 11,0
201.25		•	•	5,0 - 16,0	5,0 - 16,0
201.32		•	•	6,0 - 20,0	6,0 - 20,0

Sipariş Örneği

Type Ø D	L	A	B
201.20	32	8,0	1,8

201.20.32 / 8,3 x 11,0

202.

Type Ø D	L			A	B	R
	22	28	32			
202.13	•	•	•	2,0 - 7,0	2,0 - 7,0	0,8 - 1,5
202.16	•	•	•	2,4 - 9,0	2,4 - 9,0	
202.20	•	•	•	3,2 - 11,0	3,2 - 11,0	1,0 - 2,0
202.25		•	•	5,0 - 16,0	5,0 - 16,0	
202.32		•	•	6,0 - 20,0	6,0 - 20,0	1,5 - 3,0

Sipariş Örneği

Type Ø D	L	A	B	R
202.20	28	8,3	11,0	2,0

202.20.28 / 8,3 x 11,0 - 2,0

203.

Type Ø D	L			A	B
	22	28	32		
203.13	•	•	•	2,0 - 7,0	2,0 - 7,0
203.16	•	•	•	2,4 - 9,0	2,4 - 9,0
203.20	•	•	•	3,2 - 11,0	3,2 - 11,0
203.25		•	•	5,0 - 16,0	5,0 - 16,0
203.32		•	•	6,0 - 20,0	6,0 - 20,0

Sipariş Örneği

Type Ø D	L	A	B
203.16	28	2,5	7,0

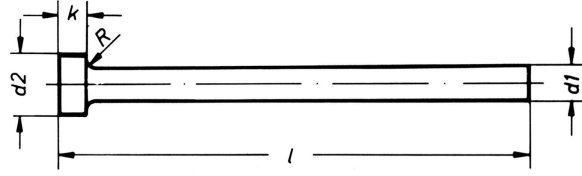
203.16.28 / 2,5 x 7,0

DIN 1530 Form A



Plastik enjeksiyon kalıplarında; itici pim olarak kullanılırlar. Gövde, sertleştirilmiş ve çok ince taşlanmıştır. They use in plastic enjeksiyon dies like ejektor device. Shank hardened and precision ground.

★ Also Hotwork Ejector pins Nitrided DIN 1530 Form A are available



Malzeme / Material : 1.2210 Takım çeliği/Tool Steel
1.2344 Sıcak iş çeliği/Hotwork Steel
Sipariş No. / Order No. : 40.1
Sertlik / Hardness : Gövde / Shank = 60 ± 2 HRC
Şapka / Head = 45 ± 5 HRC

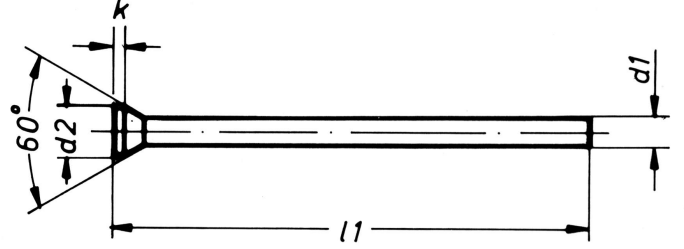
401.

d ₂ -0,2	k-0,05	R	d ₁ g6	l _{±2}	Order / Sipariş No.	
4	2	0,3	2	100	401.0200.100	
				125	401.0200.125	
				160	401.0200.160	
				200	401.0200.200	
			2,2	100	401.0220.100	
				125	401.0220.125	
				160	401.0220.160	
				200	401.0220.200	
			5	2,5	100	401.0250.100
					125	401.0250.125
					160	401.0250.160
					200	401.0250.200
2,7	100	401.0270.100				
	125	401.0270.125				
	160	401.0270.160				
	200	401.0270.200				
6	3	3	100	401.0300.100		
			125	401.0300.125		
			160	401.0300.160		
			200	401.0300.200		
		3,2	100	401.0320.100		
			125	401.0320.125		
			160	401.0320.160		
			200	401.0320.200		
		3,3	100	401.0330.100		
			125	401.0330.125		
			160	401.0330.160		
			200	401.0330.200		
7	3,5	100	401.0350.100			
		125	401.0350.125			
		160	401.0350.160			
		200	401.0350.200			
8	4	4	100	401.0400.100		
			125	401.0400.125		
			160	401.0400.160		
			200	401.0400.200		
		4,2	100	401.0420.100		
			125	401.0420.125		
			160	401.0420.160		
			200	401.0420.200		
		315	100	401.0420.250		
			125	401.0420.315		
			160	401.0420.315		
			200	401.0420.315		

401.

d ₂ -0,2	k-0,05	R	d ₁ g6	l _{±2}	Order / Sipariş No.	
8	3	0,3	4,5	100	401.0450.100	
				125	401.0450.125	
				160	401.0450.160	
				200	401.0450.200	
			10	5	250	401.0450.250
					315	401.0450.315
					100	401.0500.100
					125	401.0500.125
			160	160	401.0500.160	
				200	401.0500.200	
				250	401.0500.250	
				315	401.0500.315	
12	5	0,5	5,5	100	401.0550.100	
				125	401.0550.125	
				160	401.0550.160	
				200	401.0550.200	
			6	6	250	401.0550.250
					315	401.0550.315
					100	401.0600.100
					125	401.0600.125
			160	7	160	401.0600.160
					200	401.0600.200
					250	401.0600.250
					315	401.0600.315
14	8	0,5	7	100	401.0700.100	
				125	401.0700.125	
				160	401.0700.160	
				200	401.0700.200	
			160	8	250	401.0700.250
					315	401.0700.315
					100	401.0800.100
					125	401.0800.125
			160	8	160	401.0800.160
					200	401.0800.200
					250	401.0800.250
					315	401.0800.315
16	10	0,5	10	100	401.1000.100	
				125	401.1000.125	
				160	401.1000.160	
				200	401.1000.200	
			200	10	250	401.1000.250
					315	401.1000.315
					100	401.1200.100
					125	401.1200.125
			200	10	160	401.1200.160
					200	401.1200.200
					250	401.1200.250
					315	401.1200.315

DIN 1530 Form D



Malzeme / Material : 1.2210 Takım çeliği / Tool Steel
Sertlik / Hardness : Gövde / Shank = 60 ± 2 HRC
Şapka / Head = 45 ± 5 HRC

Plastik enjeksiyon kalıplarında; itici pim olarak kullanılırlar.
Gövde, sertleştirilmiş ve çok ince taşlanmıştır.
They use in plastic enjeksiyon dies like ejektor device.
Shank hardened and precision ground.

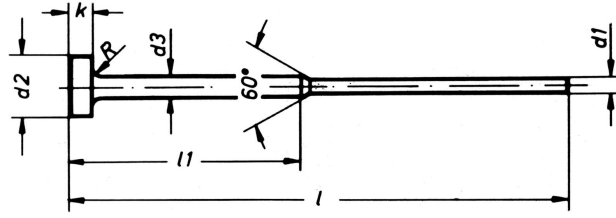
★ Also Hotwork Ejector pins Nitrided DIN 1530 Form A are available

421.

d ₂ -0,2	k+0,2	d ₁ g6	l ₁₊₂	Order / Sipariş No.
1,8	0,5	1	100	421.0100.100
		1,1		421.0110.100
2		1,2		421.0120.100
		1,3		421.0130.100
2,2		1,4		421.0140.100
		1,5	100	421.0150.100
	160		421.0150.160	
2,5		1,6	100	421.0160.100
			160	421.0160.160
		1,7	100	421.0170.100
			160	421.0170.160
2,8		1,8	100	421.0180.100
			160	421.0180.160
3		2	100	421.0200.100
			160	421.0200.160
			200	421.0200.200
3,2		2,1	100	421.0210.100
			160	421.0210.160
			200	421.0210.200
		2,2	100	421.0220.100
			160	421.0220.160
			200	421.0220.200
3,5		2,3	100	421.0230.100
			160	421.0230.160
			200	421.0230.200
		2,4	100	421.0240.100
			160	421.0240.160
			200	421.0240.200
		2,5	100	421.0250.100
			160	421.0250.160
			200	421.0250.200
4		2,6	100	421.0260.100
			160	421.0260.160
			200	421.0260.200
		2,7	100	421.0270.100
			160	421.0270.160
			200	421.0270.200
		2,8	100	421.0280.100
			160	421.0280.160
			200	421.0280.200
4,5		3	100	421.0300.100
			160	421.0300.160
			200	421.0300.200
			250	421.0300.250

421.

d ₂ -0,2	k+0,2	d ₁ g6	l ₁₊₂	Order / Sipariş No.
4,5	0,5	3,1	100	421.0310.100
			160	421.0310.160
			200	421.0310.200
			250	421.0310.250
5		3,5	100	421.0350.100
			160	421.0350.160
			200	421.0350.200
			250	421.0350.250
5,5		4	100	421.0400.100
			160	421.0400.160
			200	421.0400.200
			250	421.0400.250
6		4,5	100	421.0450.100
			160	421.0450.160
			200	421.0450.200
			250	421.0450.250
6,5		5	100	421.0500.100
			160	421.0500.160
			200	421.0500.200
			250	421.0500.250
7		5,5	100	421.0550.100
			160	421.0550.160
			200	421.0550.200
			250	421.0550.250
8		6	100	421.0600.100
			160	421.0600.160
			200	421.0600.200
			250	421.0600.250
9	1	6,5	160	421.0650.160
			200	421.0650.200
			250	421.0650.250
			160	421.0700.160
		7	200	421.0700.200
			250	421.0700.250
			160	421.0800.160
			200	421.0800.200
		8	250	421.0800.250
			160	421.1000.160
			200	421.1000.200
		10	250	421.1000.250
			160	421.1200.160
			200	421.1200.200
		12	250	421.1200.250
			160	421.1200.160
			200	421.1200.200
14		12	160	421.1200.160
			200	421.1200.200
			250	421.1200.250



Malzeme : 1.2210 Takım çeliği
 Sertlik : Gövde = 60 ± 2 HRC
 Şapka = 45 ± 5 HRC

Plastik enjeksiyon kalıplarında itici pim olarak kullanılırlar. Gövde, sertleştirilmiş ve çok ince taşlanmışır.

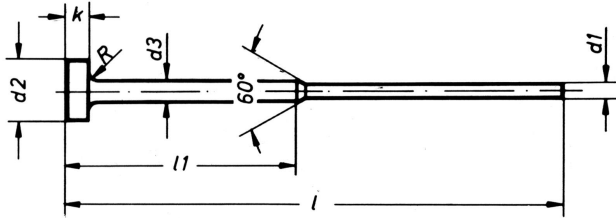
411.

d ₁ g6	d ₂ - 0,2	d ₃ - 0,1	k- 0,05	R	100	125	160	200
					50	50	75	75
0,8 - 1,4	4	2	2	0,3				
1,5 - 1,9	6	3	3					
2,0 - 2,4	6	3	3					
2,5 - 2,9	6	3	3					
3,0 - 3,9	8	4	3					

Sipariş Örneği

Kademeli İtici pim

Malzeme / WS = 411 x d₁ x l



Malzeme : 1.2344 Sıcak iş çeliği
 Sertlik : Gövde ≥ 950 HV 0.3
 Şapka = 45 ± 5 HRC

Metal enjeksiyon, bakalit kalıplarında itici pim olarak kullanılırlar. Gövde, nitrürlenmiş ve çok ince taşlanmışır.

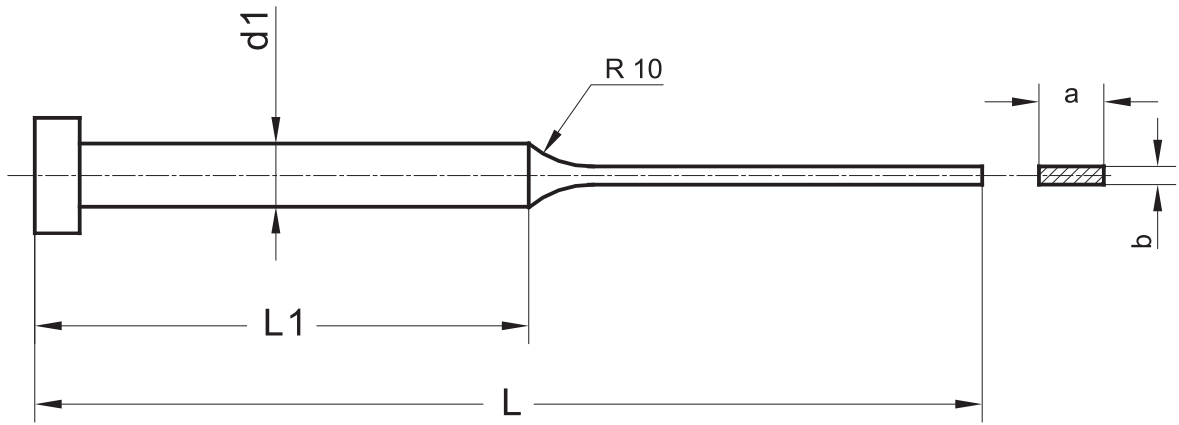
414.

d ₁ g6	d ₂ - 0,2	d ₃ - 0,1	k- 0,05	R	100	125	160	200
					50	50	75	75
0,8 - 1,4	4	2	2	0,3				
1,5 - 1,9	6	3	3					
2,0 - 2,4	6	3	3					
2,5 - 2,9	6	3	3					
3,0 - 3,9	8	4	3					

Sipariş Örneği

Kademeli İtici pim

Malzeme / WS = 414 x d₁ x l



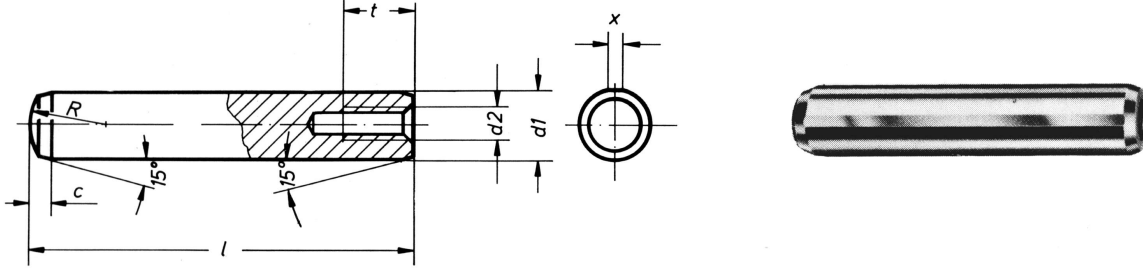
412.

Ø d1	L	100	125	160	200	250	a x b
	L1	50	60	80	100	125	
3,0		•	•	•	•	•	0,8 x 2,5
4,0		•	•	•	•	•	0,8 x 2,5
6,0		•	•	•	•	•	1,2 x 5,5
8,0		•	•	•	•	•	2,0 x 7,5
10,0		•	•	•	•	•	2,5 x 9,5
12,0		•	•	•	•	•	4,0 x 11,5
16,0		•	•	•	•	•	5,0 x 15,5

Sipariş Örneği

Ø d1	L						axb
3,0			125				0,8 x 2,5

412.0300.125 / 0,8 x 2,5



Malzeme : Sementasyon çeliği;
yüzey sertleştirilmesi
yapılmış, çok ince
taşlanmış.

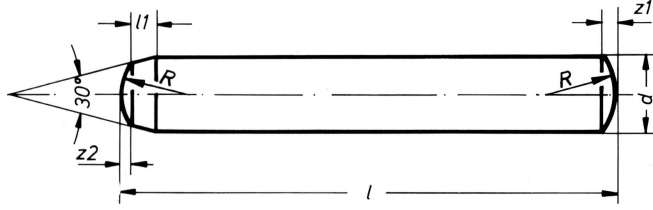
Sertlik : 60 ± 2 HRC

311.

d_1^{m6}	l	d_2	R	t	c	Sipariş no.
6	20	M4	6	6	1,5	311.0600.020
	24					311.0600.024
	28					311.0600.028
	32					311.0600.032
	36					311.0600.036
	40					311.0600.040
	50					311.0600.050
	60					311.0600.060
	8					20
24		311.0800.024				
28		311.0800.028				
32		311.0800.032				
36		311.0800.036				
40		311.0800.040				
50		311.0800.050				
60		311.0800.060				
70		311.0800.070				
80	311.0800.080					
10	20	M6	10	10	2,5	311.1000.024
	28					311.1000.028
	32					311.1000.032
	36					311.1000.036
	40					311.1000.040
	50					311.1000.050
	60					311.1000.060
	80					311.1000.080
	100					311.1000.100

311.

d_1^{m6}	l	d_2	R	t	c	Sipariş no.					
12	32	M6	12	10	3	311.1200.032					
	36					311.1200.036					
	40					311.1200.040					
	50					311.1200.050					
	60					311.1200.060					
	80					311.1200.080					
	100					311.1200.100					
	120					311.1200.120					
	14					40	M8	16	12	3,5	311.1400.040
						50					311.1400.050
60		311.1400.060									
80		311.1400.080									
100		311.1400.100									
16	40	M8	16	12	4	311.1600.040					
	50					311.1600.050					
	60					311.1600.060					
	80					311.1600.080					
	100					311.1600.100					
20	50	M10	20	16	5	311.2000.050					
	60					311.2000.060					
	80					311.2000.080					
	100					311.2000.100					
	120					311.2000.120					



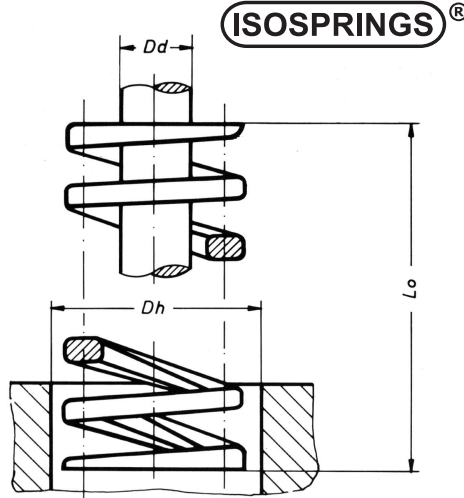
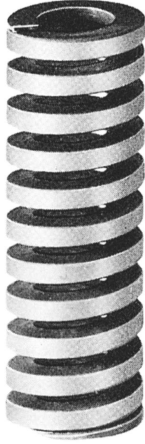
Malzeme : WS sertleştirilmiş çok ince
taşlanmış esnek takım çeliği
Sertlik : 60 ± 2 HRC

301.

d ^{m6}	l	l ₁	R	Z ₁	Z ₂	Sipariş no.
4	20	1	4	0,6	0,4	301.0400.020
	24					301.0400.024
	28					301.0400.028
	32					301.0400.032
	36					301.0400.036
5	20	1,2	5	0,75	0,5	301.0500.020
	24					301.0500.024
	28					301.0500.028
	32					301.0500.032
	36					301.0500.036
6	20	1,5	6	0,9	0,6	301.0600.020
	24					301.0600.024
	28					301.0600.028
	32					301.0600.032
	36					301.0600.036
	40					301.0600.040
	50					301.0600.050
	60					301.0600.060
	70					301.0600.070
	80					301.0600.080
8	20	1,8	8	1,2	0,8	301.0800.020
	24					301.0800.024
	28					301.0800.028
	32					301.0800.032
	36					301.0800.036
	40					301.0800.040
	50					301.0800.050
	60					301.0800.060
	70					301.0800.070
	80					301.0800.080
100	301.0800.100					

301.

d ^{m6}	l	l ₁	R	Z ₁	Z ₂	Sipariş no.					
10	20	2	10	1,5	1,0	301.1000.020					
	24					301.1000.024					
	28					301.1000.028					
	32					301.1000.032					
	36					301.1000.036					
	40					301.1000.040					
	50					301.1000.050					
	60					301.1000.060					
12	20	2,5	12	1,8	1,3	301.1200.020					
	24					301.1200.024					
	28					301.1200.028					
	32					301.1200.032					
	36					301.1200.036					
	40					301.1200.040					
	50					301.1200.050					
	60					301.1200.060					
	80					301.1200.080					
	100					301.1200.100					
14	40	2,5	16	2	1,3	301.1400.040					
	50					301.1400.050					
	60					301.1400.060					
	80					301.1400.080					
	100					301.1400.100					
	120					301.1400.120					
16	40	3	16	2,5	1,7	301.1600.040					
	50					301.1600.050					
	60					301.1600.060					
	80					301.1600.080					
	100					301.1600.100					
	120					301.1600.120					
	20					60	4	20	3	2	301.2000.060
						80					301.2000.080
100		301.2000.100									
120		301.2000.120									
140		301.2000.140									

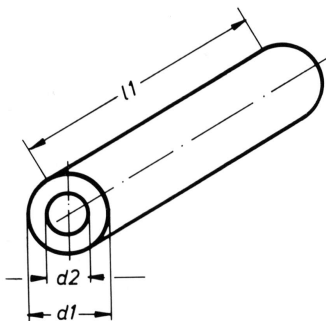


Yaylar için verilen çap ve uzunluklara göre ölçüm tablosundan arzu edilen basınç kuvvetinde seçim yapılır. Yaylar sekiz değişik delik ve malafa çapına göre düzenlenmiştir. Yay çapları özel ebadlarda olup sözü edilen delik ve malafa çaplarına uyusmaktadır.

C - Yay oranı N/mm
Fn - Yay kuvveti N
Sn - Yaylama mesafesi mm

501. / 502. / 503. / 504.

Dh mm	Dd mm	lo mm	Hafif Yükleme (Yeşil renkli) (Green Color)				Orta Yükleme (Mavi renkli) (Blue Color)				Ağır Yükleme (Kırmızı renkli) (Red Color)				Özellikle Ağır Yükleme (Sarı renkli) (Yellow Color)					
			Sipariş no.	Yay oranı C N/mm	%37,5 lo max. baskı Fn N	%37,5 lo max. baskı Sn mm	Sipariş no.	Yay oranı C N/mm	%35 lo max. baskı Fn N	%35 lo max. baskı Sn mm	Sipariş no.	Yay oranı C N/mm	%30 lo max. baskı Fn N	%30 lo max. baskı Sn mm	Sipariş no.	Yay oranı C N/mm	%25 lo max. baskı Fn N	%25 lo max. baskı Sn mm		
32	16	38	501.32.038	93,0	1330	14	502.32.038	163,0	2180	13	503.32.038	392,0	4200	11	504.32.038	530	5050	9,5		
		45	501.32.045	81,0	1330	16,5	502.32.045	136,0	2100	15	503.32.045	324,0	4200	13	504.32.045	436	4800	11		
		50	501.32.050	68,0	1300	19	502.32.050	114,0	2060	18	503.32.050	277,0	4150	15	504.32.050	368	4750	13		
		65	501.32.065	54,0	1300	24	502.32.065	88,0	1990	22	503.32.065	216,0	410	19	504.32.065	288	4600	16		
		75	501.32.075	45,0	1280	28	502.32.075	72,0	1930	27	503.32.075	176,0	4050	23	504.32.075	230	4400	19		
		90	501.32.090	38,0	1250	33	502.32.090	63,0	1930	31	503.32.090	148,0	4000	27	504.32.090	193	4250	22		
		100	501.32.100	32,0	1220	38	502.32.100	52,0	1910	36	503.32.100	128,0	4000	31	504.32.100	164	4200	26		
		115	501.32.115	28,6	1220	43	502.32.115	47,0	1910	40	503.32.115	112,0	3900	35	504.32.115	145	4000	29		
		125	501.32.125	26,0	1220	49	502.32.125	43,0	1910	44	503.32.125	101,0	3900	38	504.32.125	131	4000	32		
		150	501.32.150	21,5	1220	57	502.32.150	36,0	1910	53	503.32.150	83,0	3850	46	504.32.150	107	4000	38		
		175	501.32.175	17,9	1200	67	502.32.175	30,0	1910	62	503.32.175	70,0	3750	53	504.32.175	91	4000	44		
		200	501.32.200	15,7	1200	76	502.32.200	25,9	1870	71	503.32.200	62,0	3750	61	504.32.200	80	4000	51		
		250	501.32.250	12,5	1200	95	502.32.250	20,6	1870	89	503.32.250	49,0	3700	76	504.32.250	63	4000	64		
		300	501.32.300	10,4	1200	114	502.32.300	17,4	1870	107	503.32.300	40,0	3650	91	504.32.300	52	4000	76		
		40	20	50	501.40.050	100,0	1900	19	502.40.050	165,0	2940	18	503.40.050	354,0	5350	15	504.40.050	590	7650	13
65	501.40.065			79,0	1900	24	502.40.065	125,0	2800	22	503.40.065	273,0	5200	19	504.40.065	459	7350	16		
75	501.40.075			64,0	1850	28	502.40.075	104,0	2740	27	503.40.075	225,0	5150	23	504.40.075	364	6900	19		
90	501.40.090			56,0	1850	33	502.40.090	86,0	2700	31	503.40.090	191,0	5150	27	504.40.090	298	6700	22		
100	501.40.100			48,0	1850	38	502.40.100	75,0	2700	36	503.40.100	167,0	5100	31	504.40.100	263	6600	26		
115	501.40.115			43,0	1850	43	502.40.115	66,0	2700	40	503.40.115	145,0	5000	35	504.40.115	232	6600	29		
125	501.40.125			39,0	1850	49	502.40.125	59,0	2700	44	503.40.125	131,0	4950	38	504.40.125	205	6550	32		
150	501.40.150			31,0	1730	57	502.40.150	48,0	2700	53	503.40.150	108,0	4950	46	504.40.150	168	6400	38		
175	501.40.175			26,0	1730	67	502.40.175	43,0	2700	62	503.40.175	91,0	4900	53	504.40.175	143	6300	44		
200	501.40.200			23,3	1730	76	502.40.200	38,0	2700	71	503.40.200	79,0	4850	61	504.40.200	123	6250	51		
250	501.40.250			18,8	1730	95	502.40.250	29,5	2700	89	503.40.250	63,0	4800	76	504.40.250	96	6150	64		
300	501.40.300			15,2	1730	114	502.40.300	24,2	2700	107	503.40.300	52,0	4750	91	504.40.300	80	6100	76		
50	25			65	501.51.065	152,0	3650	24	502.51.065	206,0	4620	22	503.51.065	420,0	8000	19	504.51.065	752	12000	16
				75	501.51.075	123,0	3540	28	502.51.075	166,0	4420	27	503.51.075	339,0	7800	23	504.51.075	600	11400	19
				90	501.51.090	102,0	3440	33	502.51.090	138,0	4340	31	503.51.090	290,0	7800	27	504.51.090	506	11100	22
		100	501.51.100	90,0	3440	38	502.51.100	120,0	4300	36	503.51.100	248,0	7750	31	504.51.100	426	11050	26		
		115	501.51.115	79,0	3440	43	502.51.115	106,0	4300	40	503.51.115	217,0	7700	35	504.51.115	376	10900	29		
		125	501.51.125	70,0	3320	49	502.51.125	95,0	4220	44	503.51.125	193,0	7600	38	504.51.125	331	10500	32		
		150	501.51.150	57,0	3320	57	502.51.150	79,0	4220	53	503.51.150	156,0	7400	46	504.51.150	269	10300	38		
		175	501.51.175	50,0	3320	67	502.51.175	68,0	4220	62	503.51.175	134,0	7200	53	504.51.175	231	10200	44		
		200	501.51.200	41,0	3150	76	502.51.200	57,0	4170	71	503.51.200	117,0	7200	61	504.51.200	201	10200	51		
		250	501.51.250	34,0	3150	95	502.51.250	47,0	4080	89	503.51.250	91,0	6900	76	504.51.250	159	10200	64		
		300	501.51.300	27,8	3100	114	502.51.300	38,0	4080	107	503.51.300	74,0	6750	91	504.51.300	129	9800	76		



Çelik yayların kuvvet olarak yeterli olmadığı, yaylanma mesafesi fazla istenilmeyen kalıplarda kullanılırlar iki değişik sertliktedir.

605 = 80 Shore A= %35 esneme (Yeşil renkte)

606 = 90 Shore A= % 30 esneme (Sarı renkte)

605./606.

Sipariş no	d ₁	d ₂	l ₁
60 .016	16	6,5	300
60 .020	20	8,5	300
60 .025	25	10,5	300
60 .032	32	13,5	300
60 .040	40	17,0	300
60 .050	50	17,0	300
60 .063	63	17,0	300
60 .080	80	21,0	300
60 .100	100	21,0	300



فروشگاه کانون ابزار

نماینده شرکت kalipyansan ترکیه

kaliyansan.ir

0912 147 30 23 021 40 66 35 43

kalipyansan®

STANDART KALIP ELEMANLARI SANAYİ VE TİCARET LİMİTED ŞİRKETİ

Sanayi Mah. Gazi Cad. No: 6 34912 Kurtköy - İSTANBUL / TURKEY

Tel : +90 216 378 1212 - 13 Fax : +90 216 378 2780

E-mail: kalipyansan@kalipyansan.com

www.kalipyansan.com